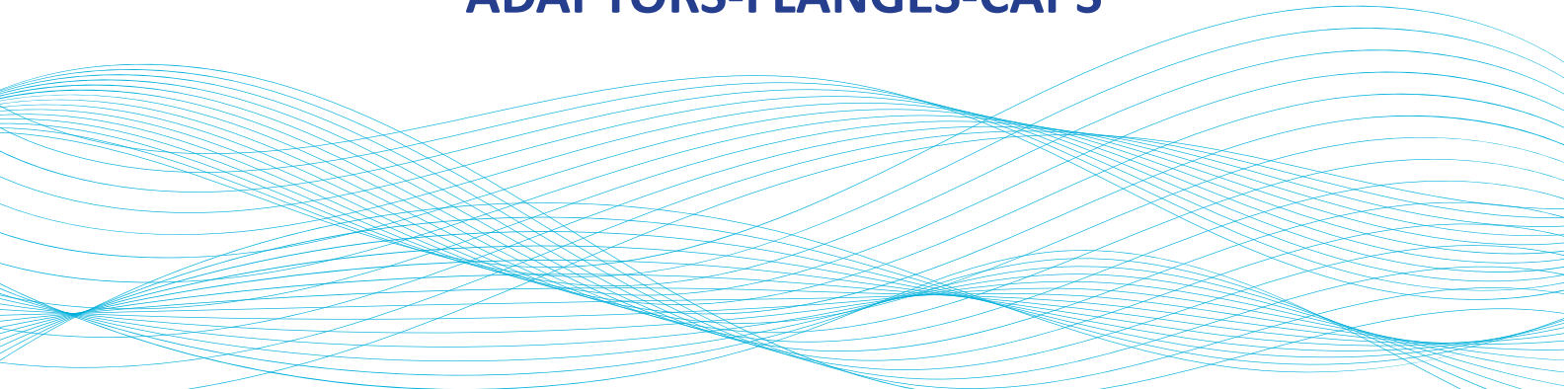


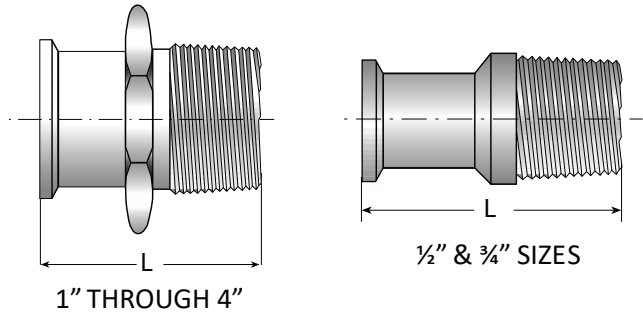
## ADAPTORS-FLANGES-CAPS



**ADAPTERS**

**Clamp X Male NPT Adapter**

Nominal Size In.	L		Ordering Code
	in.	mm	
1/2"	2.000"	50.80	015000-A30-A* **
3/4"	1.787"	45.40	020000-A30-A* **
1.0"	2.250"	57.15	025000-A30-A* **
1½"	2.250"	57.15	038000-A30-A* **
2.0"	2.638"	67.0	051000-A30-A* **
2½"	2.875"	73.0	063000-A30-A* **
3.0"	3.070"	78.0	076000-A30-A* **
4.0"	3.155"	80.1	100000-A30-A* **



\* The first digit refers to material guide, according to Table 1  
 \*\* The last digit refers to surface quality, according to Table 2

**Table 1**

304 (1.4301)	304L (1.4307)	316L (1.4404)
1	2	5

**Table 2**

Inside Surface	Outside Surface	Ordering Code
No finish requirement	Unpolished/Mill Finish	0
180 grid/0.8 µm Ra/30 µ-in	180 grid/0.8 µm Ra/30 µ-in	1
240 grid/0.51 µm Ra/20 µ-in	180 grid/0.8 µm Ra/30 µ-in	4
320 grid/0.4 µm/12 µ-in	180 grid/0.8 µm Ra/30 µ-in	7
400 grid/0.25 µm Ra/10 µ-in	180 grid/0.8 µm Ra/30 µ-in	8
Mirror Polished	Mirror Polished	9

\*Mechanically Polished



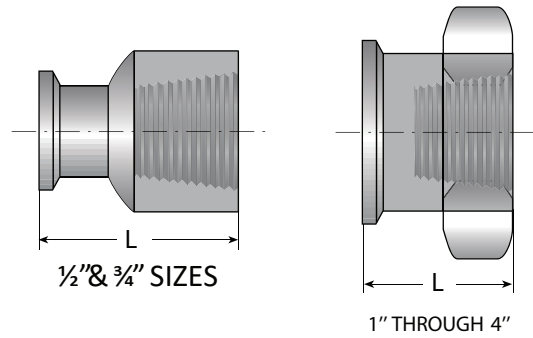
**Ordering Example**

Description	Nominal Size In.	Ordering Code
Type A30	1/2"	015000-A30-A54*

\*Material and Surface are including to the ordering code

**ADAPTERS**      **Clamp X Female NPT Adapter**

Nominal Size In.	L		Ordering Code
	in.	mm	
1/2"	1.500"	38.1	015000-A31-A* **
3/4"	1.625"	41.3	020000-A31-A* **
1.0"	1.625"	41.3	025000-A31-A* **
1½"	2.250"	57.1	038000-A31-A* **
2.0"	2.406"	61.1	051000-A31-A* **
2½"	2.187"	55.5	063000-A31-A* **
3.0"	2.187"	55.5	076000-A31-A* **
4.0"	2.625"	66.7	100000-A31-A* **



\* The first digit refers to material guide, according to Table 1  
 \*\* The last digit refers to surface quality, according to Table 2

**Table 1**

304 (1.4301)	304L (1.4307)	316L (1.4404)
1	2	5

**Table 2**

Inside Surface	Outside Surface	Ordering Code
No finish requirement	Unpolished/Mill Finish	0
180 grid/0.8 µm Ra/30 µ-in	180 grid/0.8 µm Ra/30 µ-in	1
240 grid/0.51 µm Ra/20 µ-in	180 grid/0.8 µm Ra/30 µ-in	4
320 grid/0.4 µm/12 µ-in	180 grid/0.8 µm Ra/30 µ-in	7
400 grid/0.25 µm Ra/10 µ-in	180 grid/0.8 µm Ra/30 µ-in	8
Mirror Polished	Mirror Polished	9

\*Mechanically Polished



**Ordering Example**

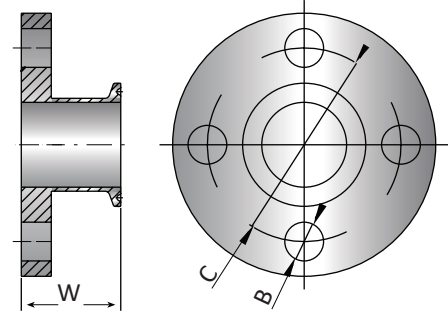
Description	Nominal Size In.	Ordering Code
Type A31	1/2"	015000-A31-A54*

\*Material and Surface are including to the ordering code

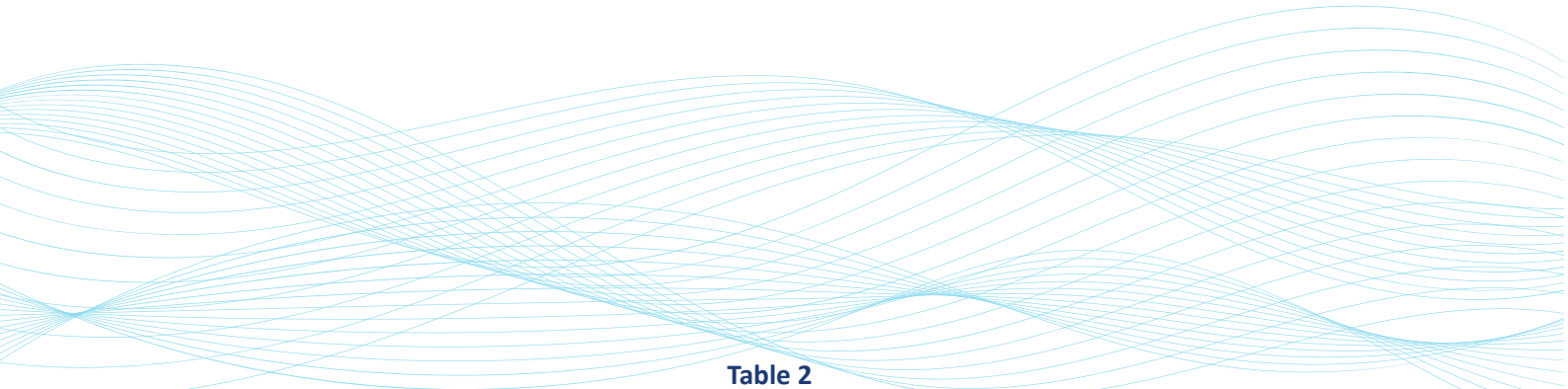
**ADAPTERS**

**Flange Adapte Clamp X  
Flange**

Nominal Size In.	W		B		C		Ordering Code
	in.	mm	in.	mm	in.	mm	
1.0"	1.625"	41.3	0.625"	15.9	3.125"	79.40	025000-992-A* **
1½"	1.625"	41.3	0.625"	15.9	3.875"	98.40	038000-992-A* **
2.0"	1.750"	44.4	0.750"	19.0	4.750"	120.6	051000-992-A* **
2½"	1.750"	44.4	0.750"	19.0	5.500"	139.7	063000-992-A* **
3.0"	1.750"	44.4	0.750"	19.0	6.000"	152.4	076000-992-A* **
4.0"	1.750"	44.4	0.750"	19.0	7.500"	190.5	100000-992-A* **
6.0"	2.188"	55.6	0.875"	22.2	9.500"	241.3	150000-992-A* **



\* The first digit refers to material guide, according to Table 1  
 \*\* The last digit refers to surface quality, according to Table 2



**Table 1**

304 (1.4301)	304L (1.4307)	316L (1.4404)
1	2	5

**Table 2**

Inside Surface	Outside Surface	Ordering Code
No finish requirement	Unpolished/Mill Finish	0
180 grid/0.8 µm Ra/30 µ-in	180 grid/0.8 µm Ra/30 µ-in	1
240 grid/0.51 µm Ra/20 µ-in	180 grid/0.8 µm Ra/30 µ-in	4
320 grid/0.4 µm/12 µ-in	180 grid/0.8 µm Ra/30 µ-in	7
400 grid/0.25 µm Ra/10 µ-in	180 grid/0.8 µm Ra/30 µ-in	8
Mirror Polished	Mirror Polished	9

\*Mechanically Polished



**Ordering Example**

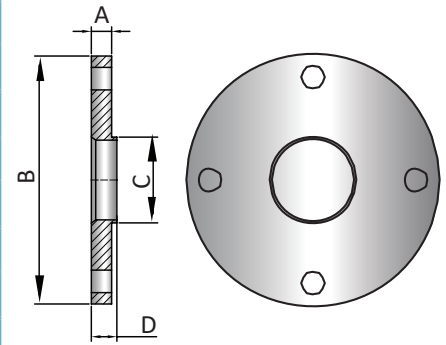
Description	Nominal Size In.	Ordering Code
Type 992	1.0"	025000-992-A54*

\*Material and Surface are including to the ordering code

**WELD FITTINGS  
FLANGES**

**Weld Neck Flanges**

Nominal Size In.	A		B		C		D		Ordering Code
	in.	mm	in.	mm	in.	mm	in.	mm	
1.0"	0.375"	9.5	4.25"	107.9	1.0"	25.4	0.500"	12.7	025000-996-A* **
1½"	0.375"	9.5	5.00"	127.0	1.5"	38.1	0.500"	12.7	038000-996-A* **
2.0"	0.500"	12.7	6.00"	152.4	2.0"	50.8	0.625"	15.9	051000-996-A* **
2½"	0.500"	12.7	7.00"	177.8	2.5"	63.5	0.625"	15.9	063000-996-A* **
3.0"	0.500"	12.7	7.50"	190.5	3.0"	76.2	0.625"	15.9	076000-996-A* **
4.0"	0.500"	12.7	9.00"	228.6	4.0"	101.6	0.625"	15.9	100000-996-A* **
6.0"	0.500"	12.7	11.00"	279.4	6.0"	152.4	0.625"	15.9	150000-996-A* **
8.0"	0.500"	12.7	13.50"	342.9	8.0"	203.2	0.625"	15.9	200000-996-A* **
10.0"	0.500"	12.7	16.00"	406.4	10.0"	254.0	0.625"	15.9	300000-996-A* **



\* The first digit refers to material guide, according to Table 1  
 \*\* The last digit refers to surface quality, according to Table 2

**Table 1**

304 (1.4301)	304L (1.4307)	316L (1.4404)
1	2	5

**Table 2**

Inside Surface	Outside Surface	Ordering Code
No finish requirement	Unpolished/Mill Finish	0
180 grid/0.8 μm Ra/30 μ-in	180 grid/0.8 μm Ra/30 μ-in	1
240 grid/0.51 μm Ra/20 μ-in	180 grid/0.8 μm Ra/30 μ-in	4
320 grid/0.4 μm/12 μ-in	180 grid/0.8 μm Ra/30 μ-in	7
400 grid/0.25 μm Ra/10 μ-in	180 grid/0.8 μm Ra/30 μ-in	8
Mirror Polished	Mirror Polished	9

\*Mechanically Polished

**Ordering Example**

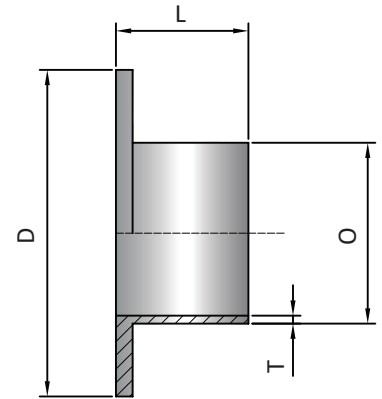
Description	Nominal Size In.	Ordering Code
Type 996	1.0"	025000-996-A54*

\*Material and Surface are including to the ordering code



**WELD FITTINGS  
FLANGES** Stub End

Nominal Size In.	L		D		O		T		Ordering Code
	in.	mm	in.	mm	in.	mm	in.	mm	
1.0"	1.625"	41.3	2.000"	50.8	1.0"	25.4	0.065"	1.65	025000-994-A* **
1½"	1.750"	44.4	2.875"	73.0	1.5"	38.1	0.065"	1.65	038000-994-A* **
2.0"	1.500"	38.1	3.625"	92.0	2.0"	50.8	0.065"	1.65	051000-994-A* **
2½"	2.000"	50.8	4.125"	104.8	2.5"	63.5	0.065"	1.65	063000-994-A* **
3.0"	2.250"	57.1	5.000"	127.0	3.0"	76.2	0.065"	1.65	076000-994-A* **
4.0"	2.625"	66.7	6.187"	157.1	4.0"	101.6	0.084"	2.11	100000-994-A* **
6.0"	3.000"	76.2	8.500"	215.9	6.0"	152.4	0.109"	2.77	150000-994-A* **
8.0"	3.000"	76.2	10.625"	269.9	8.0"	203.2	0.120"	3.05	200000-994-A* **
10.0"	3.350"	88.9	12.450"	316.2	10.0"	254.0	0.109"	2.77	300000-994-A* **



\* The first digit refers to material guide, according to Table 1  
 \*\* The last digit refers to surface quality, according to Table 2

**Table 1**

304 (1.4301)	304L (1.4307)	316L (1.4404)
1	2	5

**Table 2**

Inside Surface	Outside Surface	Ordering Code
No finish requirement	Unpolished/Mill Finish	0
180 grid/0.8 µm Ra/30 µ-in	180 grid/0.8 µm Ra/30 µ-in	1
240 grid/0.51 µm Ra/20 µ-in	180 grid/0.8 µm Ra/30 µ-in	4
320 grid/0.4 µm/12 µ-in	180 grid/0.8 µm Ra/30 µ-in	7
400 grid/0.25 µm Ra/10 µ-in	180 grid/0.8 µm Ra/30 µ-in	8
Mirror Polished	Mirror Polished	9

\*Mechanically Polished



**Ordering Example**

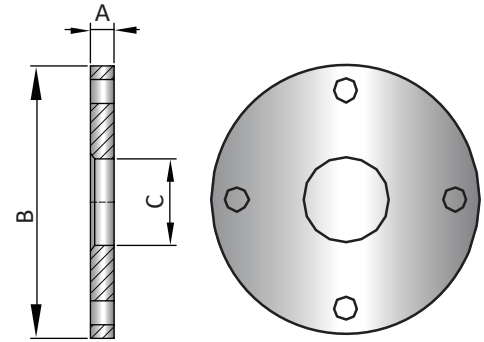
Description	Nominal Size In.	Ordering Code
Type 994	1.0"	025000-994-A54*

\*Material and Surface are including to the ordering code

**WELD FITTINGS  
FLANGES**

**Slip-On Flanges**

Nominal Size In.	A		B		C		Ordering Code
	in.	mm	in.	mm	in.	mm	
1.0"	0.375"	9.5	4.25"	107.9	1.063"	27.0	025000-995-A* **
1½"	0.375"	9.5	5.00"	127.0	1.563"	39.7	038000-995-A* **
2.0"	0.437"	11.1	6.00"	152.4	2.063"	52.4	051000-995-A* **
2½"	0.437"	11.1	7.00"	177.8	2.563"	65.1	063000-995-A* **
3.0"	0.500"	12.7	7.50"	190.5	3.063"	77.8	076000-995-A* **
4.0"	0.562"	14.3	9.00"	228.6	4.063"	103.2	100000-995-A* **
6.0"	0.562"	14.3	11.00"	279.4	6.063"	154.0	150000-995-A* **
8.0"	0.687"	17.4	13.50"	342.9	8.063"	204.8	200000-995-A* **
10.0"	0.687"	17.4	16.00"	406.4	10.063"	255.6	300000-995-A* **



\* The first digit refers to material guide, according to Table 1  
 \*\* The last digit refers to surface quality, according to Table 2

**Table 1**

304 (1.4301)	304L (1.4307)	316L (1.4404)
1	2	5

**Table 2**

Inside Surface	Outside Surface	Ordering Code
No finish requirement	Unpolished/Mill Finish	0
180 grid/0.8 µm Ra/30 µ-in	180 grid/0.8 µm Ra/30 µ-in	1
240 grid/0.51 µm Ra/20 µ-in	180 grid/0.8 µm Ra/30 µ-in	4
320 grid/0.4 µm/12 µ-in	180 grid/0.8 µm Ra/30 µ-in	7
400 grid/0.25 µm Ra/10 µ-in	180 grid/0.8 µm Ra/30 µ-in	8
Mirror Polished	Mirror Polished	9

\*Mechanically Polished



**Ordering Example**

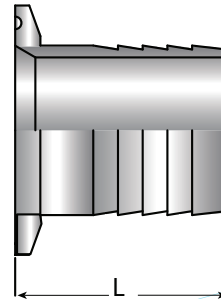
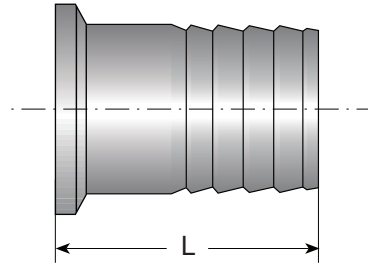
Description	Nominal Size In.	Ordering Code
Type 995	1.0"	025000-995-A54*

\*Material and Surface are including to the ordering code

**HOSE BARBS** Rubber Hose Adapter

Nominal Size	Dimensions		Ordering Code
	L in.	L mm.	
1/2"	1.496"	38.0	015015-150-A* **
3/4"	1.496"	38.0	020020-150-A* **
1.0"	1.693"	43.0	025025-150-A* **
1½"	1.693"	43.0	038038-150-A* **
2.0"	2.323"	59.0	051051-150-A* **
2½"	2.323"	59.0	063063-150-A* **
3.0"	3.090"	78.6	076076-150-A* **
4.0"	3.410"	86.5	100100-150-A* **

\* The first digit refers to material guide, according to Table 1  
 \*\* The last digit refers to surface quality, according to Table 2



**Table 1**

304 (1.4301)	304L (1.4307)	316L (1.4404)
1	2	5

**Table 2**

Inside Surface	Outside Surface	Ordering Code
No finish requirement	Unpolished/Mill Finish	0
180 grid/0.8 μm Ra/30 μ-in	180 grid/0.8 μm Ra/30 μ-in	1
240 grid/0.51 μm Ra/20 μ-in	180 grid/0.8 μm Ra/30 μ-in	4
320 grid/0.4 μm/12 μ-in	180 grid/0.8 μm Ra/30 μ-in	7
400 grid/0.25 μm Ra/10 μ-in	180 grid/0.8 μm Ra/30 μ-in	8
Mirror Polished	Mirror Polished	9

\*Mechanically Polished



**Ordering Example**

Description	Nominal Size In.	Ordering Code
Type B10	1.0"	025000-150-A54*

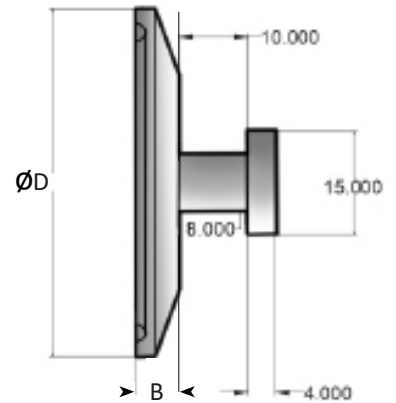
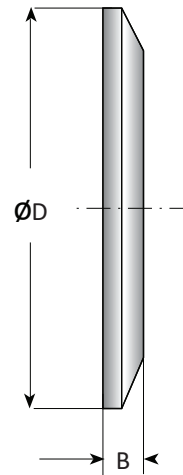
\*Material and Surface are including to the ordering code



Nominal Size In.	D		B		Ordering Code	
	in.	mm	in.	mm	Standard Solid cap	Solid cap with Handle
1/2" - 3/4"	0.992"	252.0	0.252"	6.4	015000-000-A* **	015000-00H-A* **
1.0" (A)	1.339"	34.0	0.252"	6.4	024000-000-A* **	024000-00H-A* **
1.0" - 1 1/2"	1.988"	50.5	0.252"	6.4	038000-000-A* **	038000-00H-A* **
2.0"	2.520"	60.4	0.252"	6.4	051000-000-A* **	051000-00H-A* **
2 1/2"	3.051"	77.5	0.252"	6.4	063000-000-A* **	063000-00H-A* **
3.0"	3.583"	91.0	0.252"	6.4	076000-000-A* **	076000-00H-A* **
4.0"	4.685"	119.0	0.311"	7.9	100000-000-A* **	100000-00H-A* **
6.0"	6.567"	166.8	0.437"	11.1	150000-000-A* **	150000-00H-A* **
8.0"	8.571"	217.7	0.437"	11.1	200000-000-A* **	200000-00H-A* **
10.0"	10.571"	268.5	0.437"	11.1	250000-000-A* **	250000-00H-A* **
12.0"	12.571"	319.3	0.437"	11.1	300000-000-A* **	300000-00H-A* **

\* The first digit refers to material guide, according to Table 1

\*\* The last digit refers to surface quality, according to Table 2



**Table 1**

304 (1.4301)	304L (1.4307)	316L (1.4404)
1	2	5

**Table 2**

Inside Surface	Outside Surface	Ordering Code
No finish requirement	Unpolished/Mill Finish	0
180 grid/0.8 µm Ra/30 µ-in	180 grid/0.8 µm Ra/30 µ-in	1
240 grid/0.51 µm Ra/20 µ-in	180 grid/0.8 µm Ra/30 µ-in	4
320 grid/0.4 µm/12 µ-in	180 grid/0.8 µm Ra/30 µ-in	7
400 grid/0.25 µm Ra/10 µ-in	180 grid/0.8 µm Ra/30 µ-in	8
Mirror Polished	Mirror Polished	9

\*Mechanically Polished

**Ordering Example**

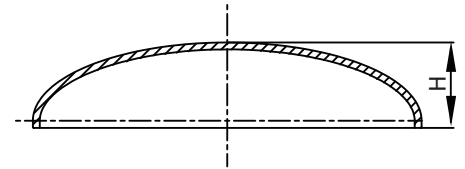
Description	Nominal Size In.	Ordering Code
Type 000	1/2" - 3/4"	015020-000-A54*

\*Material and Surface are including to the ordering code



**WELD FITTINGS CAPS**      **Butt Weld Dome Cap**

Nominal Size In.	H		Ordering Code
	in.	mm	
1.0"	0.375"	9.50	025000-003-A* **
1½"	0.562"	14.30	038000-003-A* **
2.0"	0.750"	19.05	051000-003-A* **
2½"	1.000"	25.40	063000-003-A* **
3.0"	1.250"	31.70	076000-003-A* **
4.0"	1.550"	38.10	100000-003-A* **
6.0"	1.875"	47.60	150000-003-A* **
8.0"	2.500"	63.50	200000-003-A* **



\* The first digit refers to material guide, according to Table 1  
 \*\* The last digit refers to surface quality, according to Table 2

**Table 1**

304 (1.4301)	304L (1.4307)	316L (1.4404)
1	2	5

**Table 2**

Inside Surface	Outside Surface	Ordering Code
No finish requirement	Unpolished/Mill Finish	0
180 grid/0.8 µm Ra/30 µ-in	180 grid/0.8 µm Ra/30 µ-in	1
240 grid/0.51 µm Ra/20 µ-in	180 grid/0.8 µm Ra/30 µ-in	4
320 grid/0.4 µm/12 µ-in	180 grid/0.8 µm Ra/30 µ-in	7
400 grid/0.25 µm Ra/10 µ-in	180 grid/0.8 µm Ra/30 µ-in	8
Mirror Polished	Mirror Polished	9

\*Mechanically Polished



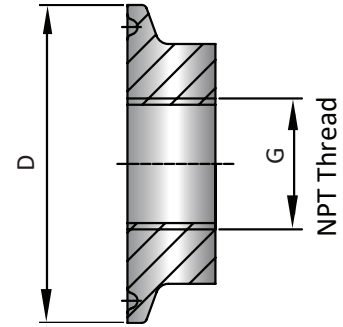
**Ordering Example**

Description	Nominal Size In.	Ordering Code
Type 003	1.0"	025000-003-A54*

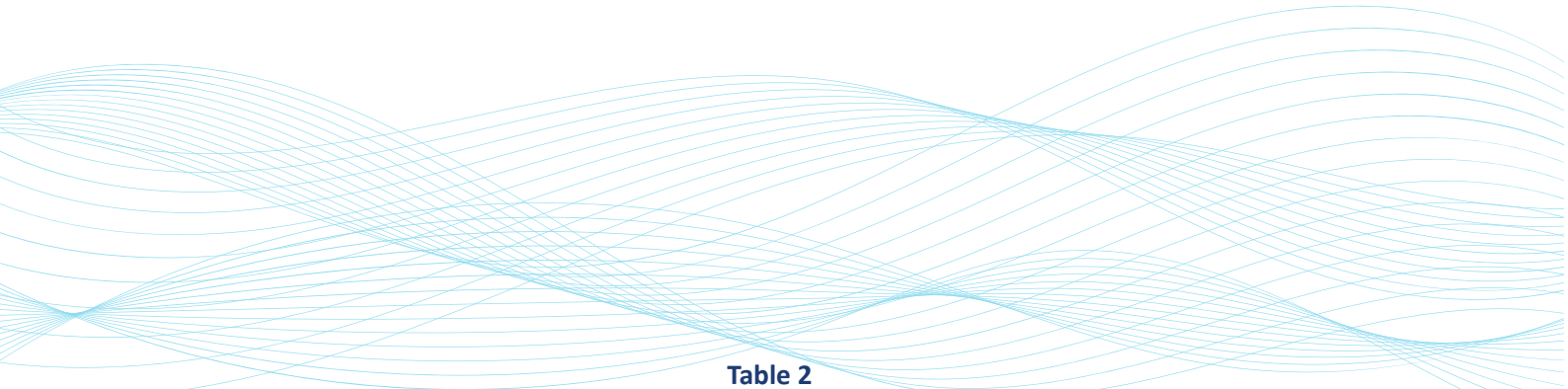
\*Material and Surface are including to the ordering code



Nominal Size In.	D		G		Ordering Code
	in.	mm	in.	mm	
1.0"	1.988"	50.5	0.50"	12.7	025000-105-A* **
1½"	1.988"	50.5	0.75"	19.0	038000-105-A* **
2.0"	2.520"	64.0	0.75"	19.0	051000-105-A* **
2½"	3.050"	77.5	0.75"	19.0	063000-105-A* **
3.0"	3.580"	91.0	0.75"	19.0	076000-105-A* **
4.0"	4.685"	119.0	0.75"	19.0	100000-105-A* **



\* The first digit refers to material guide, according to Table 1  
 \*\* The last digit refers to surface quality, according to Table 2



**Table 1**

304 (1.4301)	304L (1.4307)	316L (1.4404)
1	2	5

**Table 2**

Inside Surface	Outside Surface	Ordering Code
No finish requirement	Unpolished/Mill Finish	0
180 grid/0.8 µm Ra/30 µ-in	180 grid/0.8 µm Ra/30 µ-in	1
240 grid/0.51 µm Ra/20 µ-in	180 grid/0.8 µm Ra/30 µ-in	4
320 grid/0.4 µm Ra/12 µ-in	180 grid/0.8 µm Ra/30 µ-in	7
400 grid/0.25 µm Ra/10 µ-in	180 grid/0.8 µm Ra/30 µ-in	8
Mirror Polished	Mirror Polished	9

\*Mechanically Polished



**Ordering Example**

Description	Nominal Size In.	Ordering Code
Type 105	1.0"	025000-105-A54*

\*Material and Surface are including to the ordering code